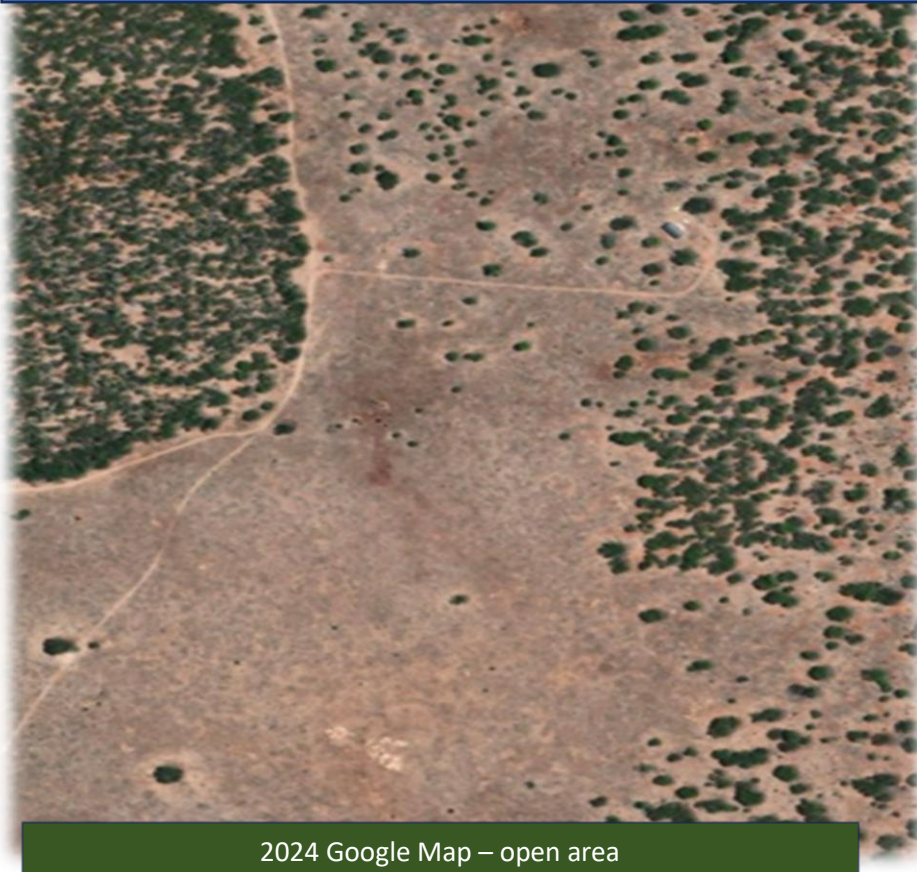


# Using on line free Google Maps for Property Management planning



Google Maps are an essential tool in property management and planning

Most people know that Google Maps is a web service that provides detailed information about geographical regions and sites worldwide. In addition, it shows conventional road maps although in this area in SA the Google map information is not accurate being that it lists the existence of roads that in fact are tracks that peter out behind a locked gate in a farmers Paddock

A fab tool of Google Maps offers is its aerial and satellite views. Using such tools we can create local area maps to aid in our property management planning.

Here we have a google maps screen cut of an open area on Section 13. Using tools, we have added an image of the target area (red line) as well as adding green shape files to indicate 'Shrubs and trees", giving the impression of what it would look like if an open woodland style replanting was undertaken.